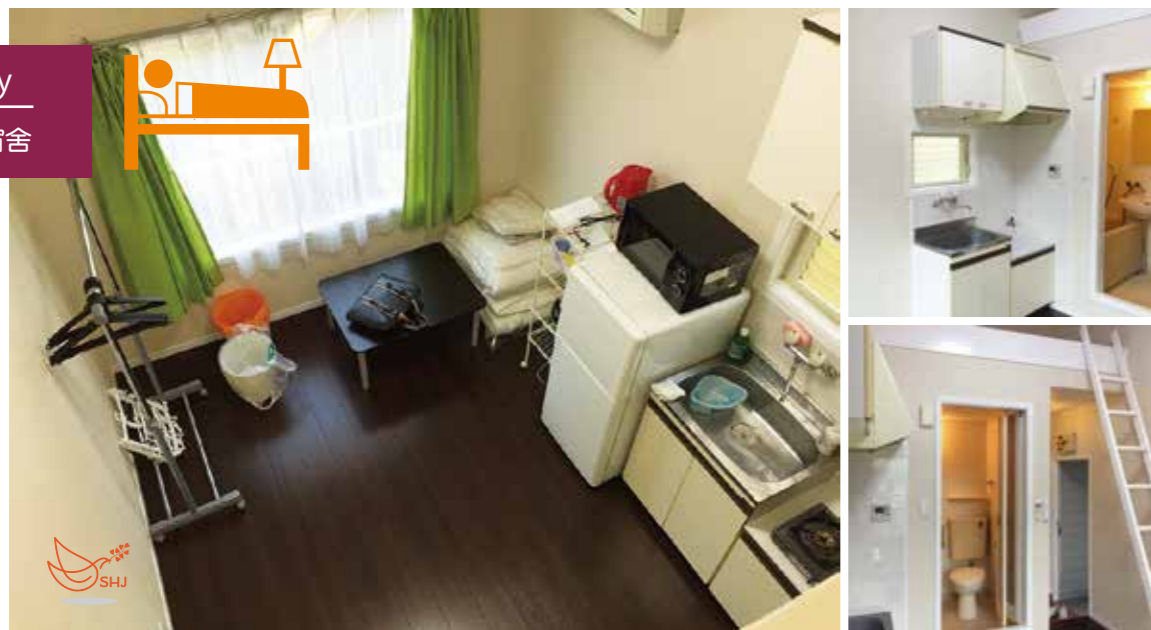


Higashi Nakano Apartment

东中野公寓

S.H.J. Dormitory
学生宿舍



東中野



Type: 1 room Apartment - 5 rooms
Capacity: 10 persons (2 persons per room)
类型: 一室公寓1栋 (5房间)
定员: 10名 (1室2名)



Koenji Apartment

高円寺公寓

高円寺

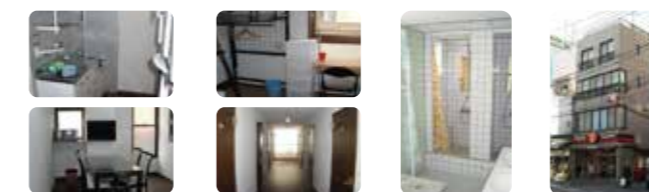


Type: 1 room Apartment - 8 rooms
Capacity: 16 persons (2 persons per room)
类型: 一室公寓1栋 (8房间)
定员: 16名 (1室2名)



Takadanobaba Dormitory

高田马场合租房



高田馬場



Type: Guest House Building - 22 rooms
Capacity: 22 persons (single private room)
Equipment: air conditioner, bed, blind, dust box
PC desk, chair, chest, refrigerator
Shared: shower, bathroom, coin-operated laundry
kitchen, cooking equipment, toaster, microwave
*Free internet access, Self-locking front door system

类型: 单间租房1栋 (22房间)
定员: 22名 (1室1名)
专用备品: 空调, 阁楼, 卷帘, 垃圾箱,
电脑桌, 椅子, 柜子, 冰箱
共有备品: 洗手间, 淋浴, 投币式洗衣房 (有料),
厨房, 烹饪工具, 烤面包机, 微波炉
※免费网络线路, 自动上锁门

Part-time Work

打工

Living in Tokyo

东京的生活

For foreign students who wish to work part-time, the first thing to do is to apply for and obtain a shikakugai katsudo kyoka (Permit to Engage in Activity other than that Permitted by the Status of Residence Previously Granted) at the nearest Regional Immigration Bureau.



为了打工, 有必要在地方入国管理局办理「资格外活动许可」。

28 hours/per week



The hourly wage varies according to type of work and location but those working in food services are getting about JPY 1,000 to JPY 1,300 an hour. Assuming that the maximum of 28 hours a week is fully used up to work; their earning will be around JPY 28,000 to JPY 36,400. 小时工资与工作的种类和场所不同价格, 饮食业的情况从1000日元开始, 1,300日元不等, 可打工上线时间一周28小时来计算, 可拿工资分别28,000日元到36,000日元。

Living cost in Tokyo ¥88,000 (\$880)

东京的生活费

The average monthly expenses of an international student in Tokyo 雑費 miscellaneous expense
东京在留学生每月平均生活费 趣味・娯楽費 hobby, entertainment



水电煤气费 light, water and gas

通信費 communications

交通费 transportation

医療費 medical